

# INSTALLATION INSTRUCTIONS

VEHICLE

DODGE DAKOTA

EQUIPMENT REQUIRED: TAPE

WIRING ACCESS LOCATION: PU1, PU2

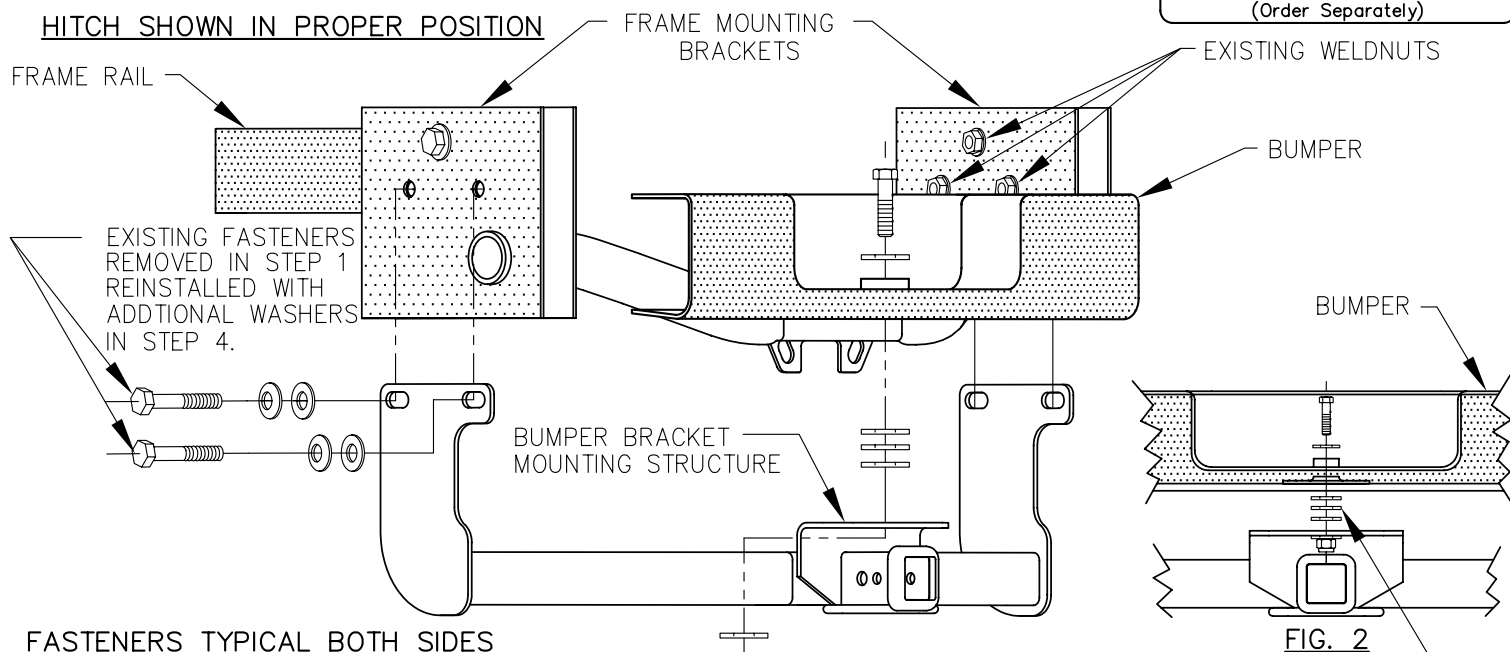
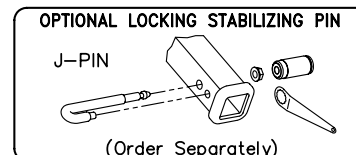
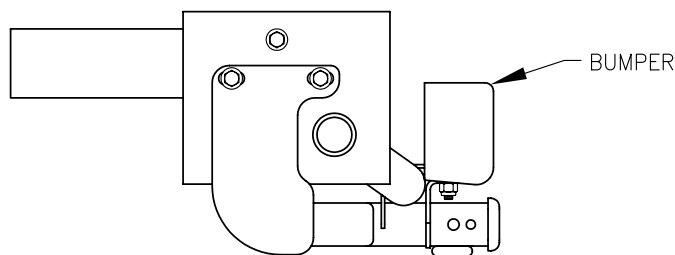
DRILL BITS: NONE

HITCH REQUIRES 5/8" PIN AND CLIP IF STABILIZING PIN IS NOT INSTALLED.

WRENCHES: (TIGHTEN ALL FASTENERS WITH TORQUE WRENCH) 1-1/8, 22mm

DO NOT EXCEED LOWER OF  
TOWING VEHICLE MFR'S RATINGS OR

HITCH TYPE ▼	MAX GROSS TRLR WT(LB)	MAX TONGUE WT(LB)
WEIGHT DISTRIBUTING	8000	800
WEIGHT CARRYING BALL MOUNT	5000	500



3/4-10 X 2.75 GR 5  
FLATWASHER  
BUMPER STRUCTURE  
FLATWASHER (3)  
BUMPER BRACKET  
MOUNTING STRUCTURE  
FLATWASHER  
3/4-10 HEX LOCKNUT

NOTE: ADDITIONAL FLATWASHER  
(PROVIDED) MAY BE INSERTED  
FOR MORE CLEARANCE.

1. REMOVE THE LOWER BOLTS FROM THE FRAME MOUNTING BRACKETS (2) PER SIDE. BOLTS WILL BE USED FOR HITCH INSTALLATION, DO NOT DISCARD.
2. ATTACH FLATWASHERS WITH TAPE TO THE UNDERSIDE OF THE BUMPER (SEE FIG. 2).
3. INSERT BUMPER BRACKET MOUNTING STRUCTURE BETWEEN FLATWASHERS (INSTALLED IN STEP 2) AND BUMPER.
4. SWIVEL HITCH INTO POSITION AND LOOSELY REINSTALL FASTENERS REMOVED IN STEP 1. WITH ADDITIONAL FLATWASHERS.
5. INSTALL BUMPER BRACKET MOUNTING STRUCTURE FASTENERS AS SHOWN ABOVE.
6. TIGHTEN ALL FASTENERS TO THE REQUIRED TORQUE SPECIFICATIONS.

TIGHTEN ALL 3/4" GR 5 FASTENERS TO 260 LB-FT.

TIGHTEN ALL M14 CL8.8 FASTENERS TO 89 LB-FT.

THIS PRODUCT COMPLIES WITH SAFETY SPECIFICATIONS AND REQUIREMENTS FOR CONNECTING DEVICES AND TOWING SYSTEMS OF THE STATE OF NEW YORK, V.E.S.C. REGULATION V-5 AND SAE J684.

APPROX WEIGHT (LB.)

40

FASTENER KIT

75251GF

NOTE: Check hitch frequently, making sure all fasteners and ball are properly tightened. If hitch is removed, plug all holes in trunk pan or other body panels to prevent entry of water and exhaust fumes. A hitch or ball which has been damaged should be removed and replaced. Observe safety precautions when working beneath a vehicle and wear eye protection. Follow car maker's specs for maximum trailer weight and tongue weight. Do not cut access or attachment holes with a torch.



CEQUENT®  
TOWING PRODUCTS