

GROSS LOAD CAPACITY WHEN USED AS A WEIGHT CARRYING HITCH: 2,000 LBS. TRAILER WEIGHT & 200 LBS. TONGUE WEIGHT.

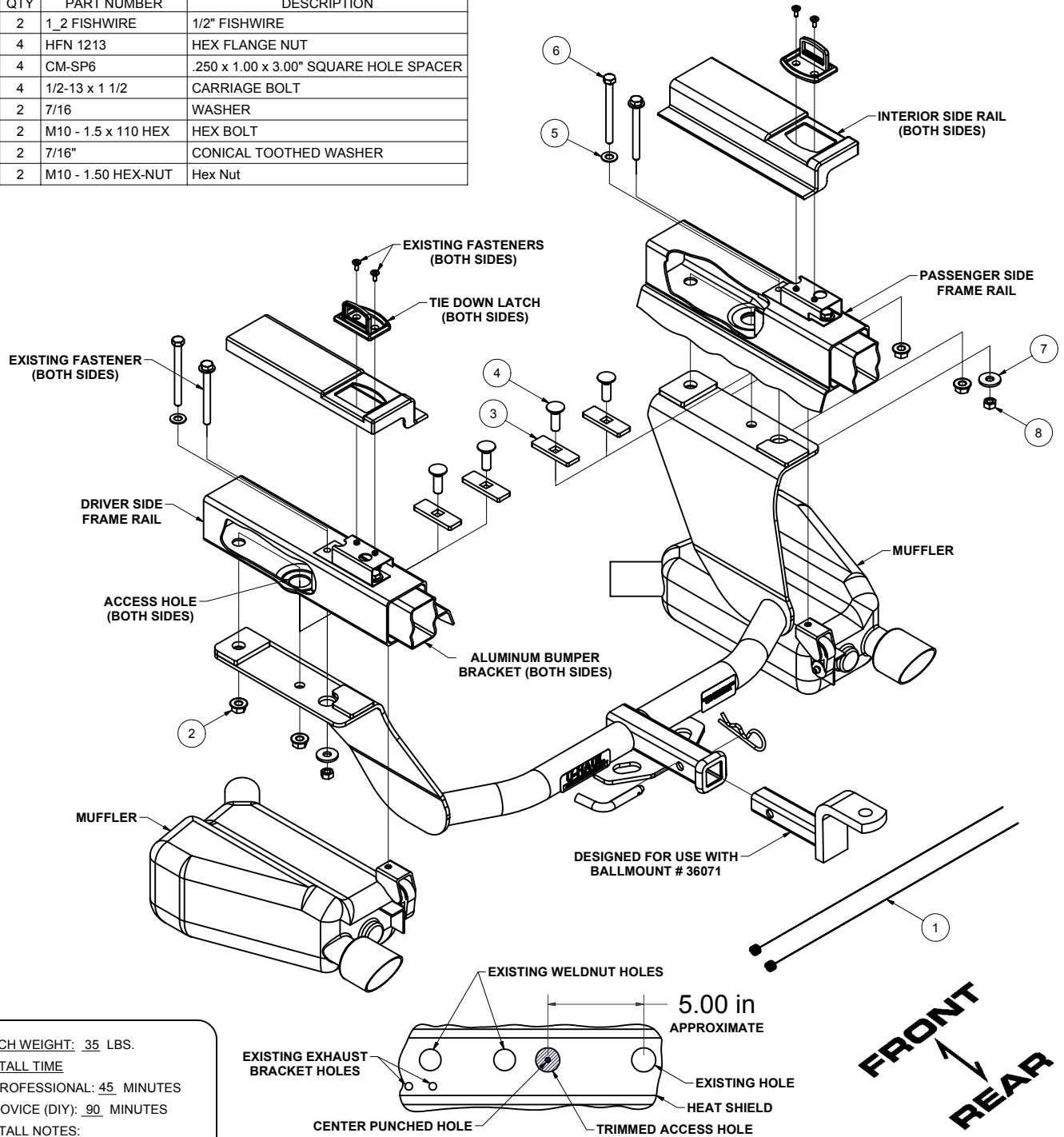
DO NOT EXCEED VEHICLE MANUFACTURER'S RECOMMENDED TOWING CAPACITY.

WARNING: ALL NON-TRAILER LOADS APPLIED TO THIS PRODUCT MUST BE SUPPORTED BY AUXILIARY STABILIZING STRAPS.

** FAILURE TO PROPERLY SUPPORT NON-TRAILER LOADS WILL VOID PRODUCT WARRANTY**

HAVING INSTALLATION QUESTIONS? CALL TECHNICAL SUPPORT AT 1-800-798-0813

Parts List			
ITEM	QTY	PART NUMBER	DESCRIPTION
1	2	1_2 FISHWIRE	1/2" FISHWIRE
2	4	HFN 1213	HEX FLANGE NUT
3	4	CM-SP6	.250 x 1.00 x 3.00" SQUARE HOLE SPACER
4	4	1/2-13 x 1 1/2	CARRIAGE BOLT
5	2	7/16	WASHER
6	2	M10 - 1.5 x 110 HEX	HEX BOLT
7	2	7/16"	CONICAL TOOTHED WASHER
8	2	M10 - 1.50 HEX-NUT	Hex Nut



HITCH WEIGHT: .35 LBS.

INSTALL TIME

PROFESSIONAL: 45 MINUTES

NOVICE (DIY): 90 MINUTES

INSTALL NOTES:

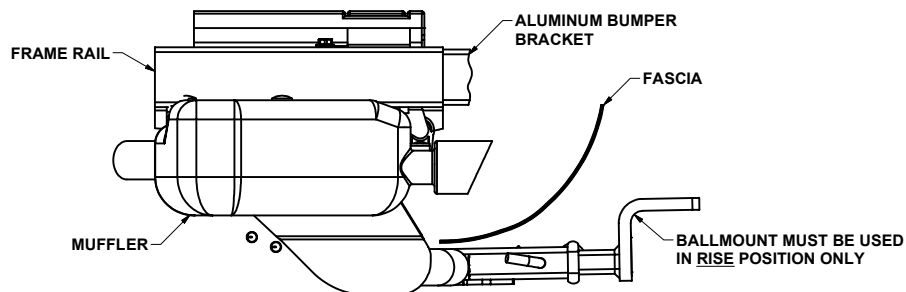
- NO DRILLING REQUIRED
- LOWER EXHAUST
- HEAT SHIELD TRIMMING REQUIRED

HEAT SHIELD TRIM DETAIL

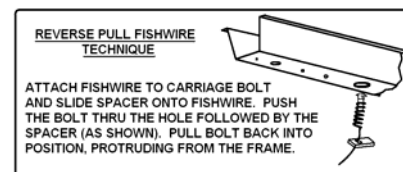
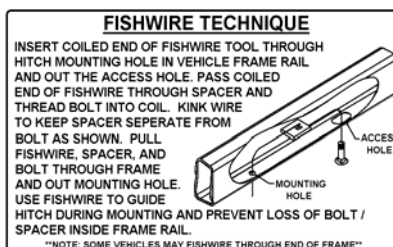
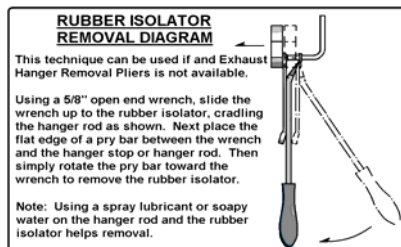
PERIODICALLY CHECK THIS RECEIVER HITCH TO ENSURE THAT ALL FASTENERS ARE TIGHT AND THAT ALL STRUCTURAL COMPONENTS ARE SOUND.

Curt Manufacturing Inc., warrants this product to be free of defects in material and/or workmanship at the time of retail purchase by the original purchaser. If the product is found to be defective, Curt Manufacturing Inc., may repair or replace the product, at their option, when the product is returned, prepaid, with proof of purchase. Alteration to, misuse of, or improper installation of this product voids the warranty. Curt Manufacturing Inc.'s liability is limited to repair or replacement of products found to be defective, and specifically excludes liability for incidental or consequential loss or damage.

TOOLS REQUIRED
RATCHET
RATCHET EXTENSION
10mm SOCKET
13mm SOCKET
16mm SOCKET
T-30 TORX
CENTER PUNCH
TORQUE WRENCH



HITCH SHOWN IN PROPER POSITION



INSTALLATION STEPS

1. Removing fasteners from the exhaust brackets to lower exhaust, support as needed to prevent damage.
2. Raise hitch into position. Using a center punch, punch through the center hole of the hitch and into the heat shield.
3. Lower hitch and cut out the area of the heat shield covering the access hole. **See heat shield trim detail.**
4. Fishwire 1/2-13 X 1 1/2" carriage bolt and SP6 spacer through the access hole and out the forward most hole in frame, both sides. (SEE FISHWIRE TECHNIQUES)
5. Reverse fishwire 1/2-13 X 1 1/2" carriage bolt and SP6 spacer through the access hole, both sides. (SEE REVERSE FISHWIRE TECHNIQUES)
6. Open rear hatch and remove middle lid covering the spare tire.
7. Remove the rear most tie down latches from both side rails.
8. Remove the side rails.
9. Remove the forward most bumper bracket fastener and return to owner.
10. Replace bumper bracket fastener with M10-1.5 X 110 hex bolt and 7/16" flat washer, both sides.
11. Torque M10-1.5 X 110 hex bolts to 35 ft-lbs.
12. Reinstall all trunk components and close hatch.
13. Raise hitch into position, as shown.
14. Secure the (4) forward most bolts with 1/2" flange nuts.
15. Secure the rear most bolts with 7/16" conical toothed washer and M10 hex nut.
16. Torque all M10 hardware to 35 ft-lbs. Torque all 1/2" hardware to 75 ft-lbs.
17. Reinstall exhaust.

PERIODICALLY CHECK THIS RECEIVER HITCH TO ENSURE THAT ALL FASTENERS ARE TIGHT AND THAT ALL STRUCTURAL COMPONENTS ARE SOUND.