

1/20/2014

GROSS LOAD CAPACITY WHEN USED AS A WEIGHT CARRYING HITCH: 2,000 LBS. TRAILER WEIGHT & 200 LBS. TONGUE WEIGHT.

\*\*\*DO NOT EXCEED VEHICLE MANUFACTURER'S RECOMMENDED TOWING CAPACITY.\*\*\*

WARNING: ALL NON-TRAILER LOADS APPLIED TO THIS PRODUCT MUST BE SUPPORTED BY AUXILIARY STABILIZING STRAPS.

\*\* FAILURE TO PROPERLY SUPPORT NON-TRAILER LOADS WILL VOID PRODUCT WARRANTY\*\*

HAVING INSTALLATION QUESTIONS? CALL TECHNICAL SUPPORT AT 1-800-798-0813

### TOOLS REQUIRED

RATCHET

TORQUE WRENCH

9" SOCKET EXTENSION

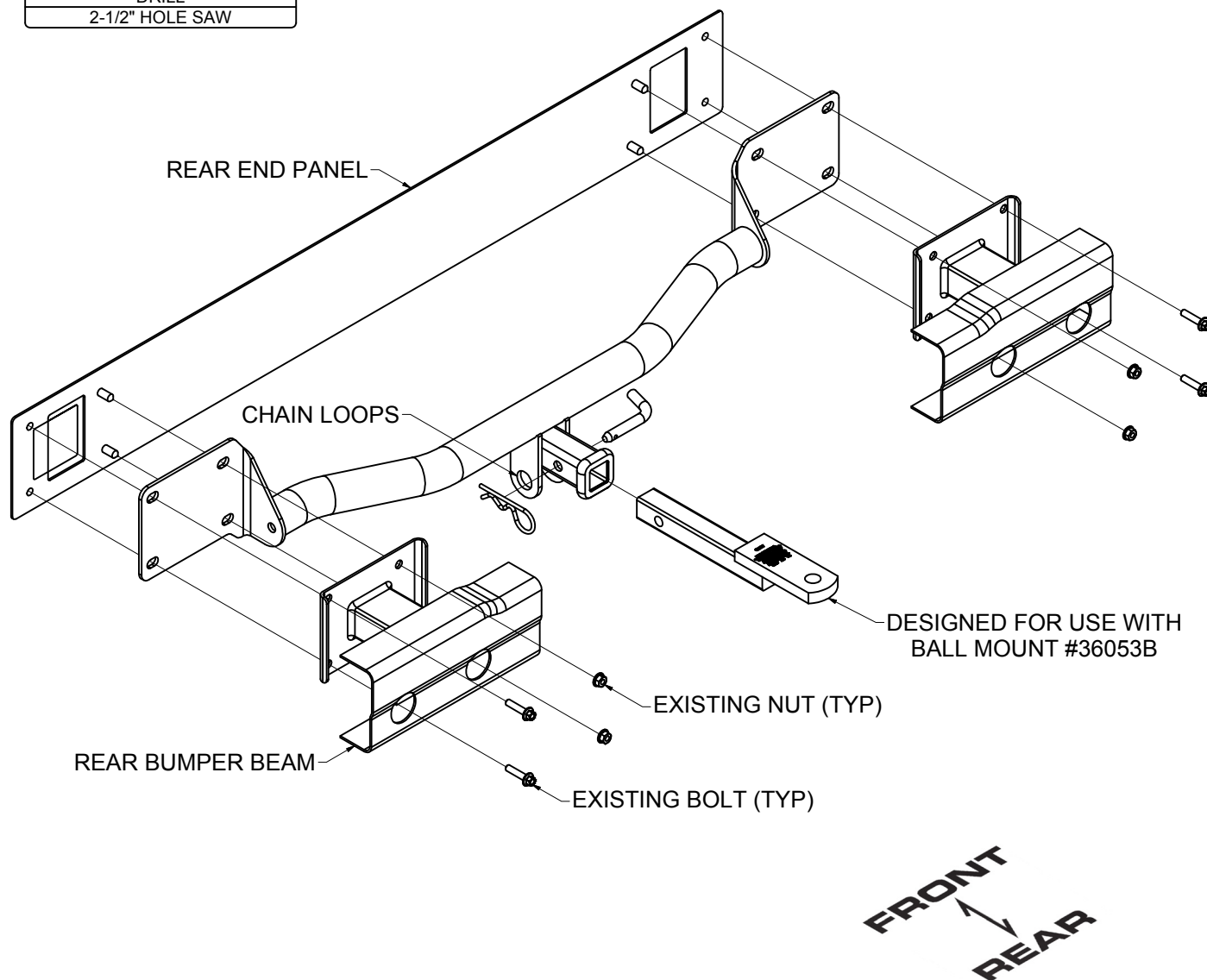
13mm SOCKET

SCREW DRIVER

DRILL

2-1/2" HOLE SAW

**NOTE:** HITCH ATTACHES USING EXISTING VEHICLE HARDWARE



HITCH WEIGHT: 24 LBS.

### INSTALL TIME

PROFESSIONAL: 60 MINUTES

NOVICE (DIY): 120 MINUTES

### INSTALL NOTES:

- REMOVE BUMPER COVER
- FASCIA TRIMMING REQUIRED

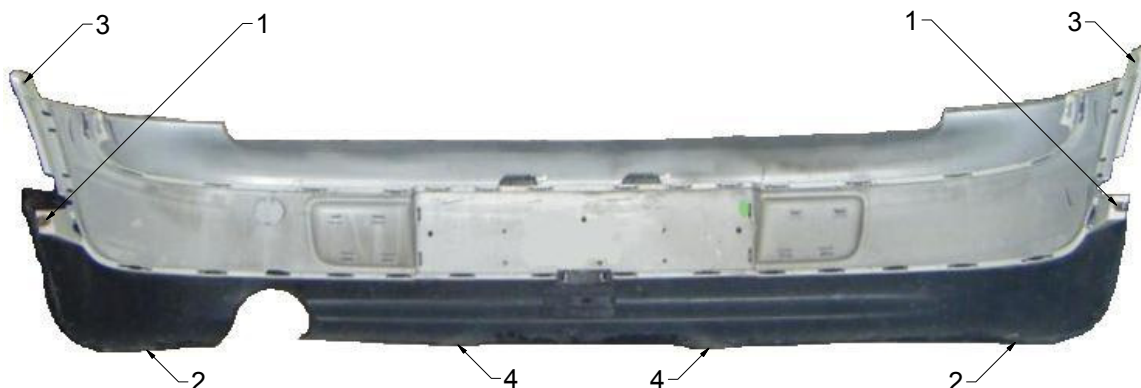
**NOTE:** Longer safety chains may be required to reach the chain loops. Verify that your safety chains are long enough to clear bumper cover while turning before towing.

**PERIODICALLY CHECK THIS RECEIVER HITCH TO ENSURE THAT ALL FASTENERS ARE TIGHT AND THAT ALL STRUCTURAL COMPONENTS ARE SOUND.**

Curt Manufacturing Inc., warrants this product to be free of defects in material and/or workmanship at the time of retail purchase by the original purchaser. If the product is found to be defective, Curt Manufacturing Inc., may repair or replace the product, at their option, when the product is returned, prepaid, with proof of purchase. Alteration to, misuse of, or improper installation of this product voids the warranty. Curt Manufacturing Inc.'s liability is limited to repair or replacement of products found to be defective, and specifically excludes liability for incidental or consequential loss or damage.

## **INSTALLATION STEPS:**

1. Remove (8) fasteners that secure the bumper cover.



**Note:** Fastener locations as viewed from inside of the bumper cover.

2. Using phillips screwdriver remove fastener 1 from inside the rear wheel well.

**Note:** If needed you may remove the rear wheels to access screws.



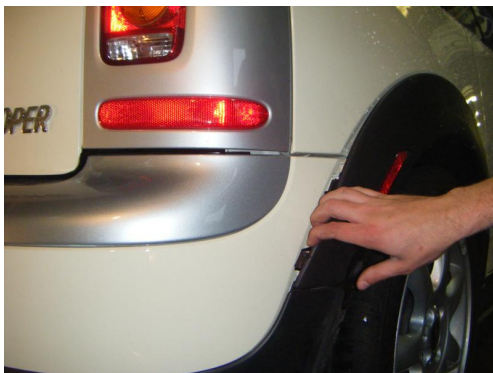
3. Using phillips screwdriver, remove fastener 2 from the bottom of the bumper near the rear wheel well. The second photo shows the optional mud flap removed.



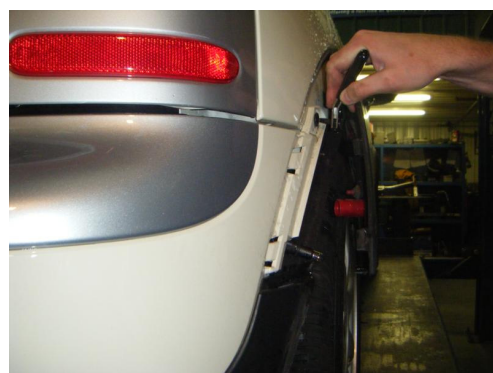
**PERIODICALLY CHECK THIS RECEIVER HITCH TO ENSURE THAT ALL FASTENERS ARE TIGHT AND THAT ALL STRUCTURAL COMPONENTS ARE SOUND.**

### INSTALLATION STEPS:

4. Slide one hand past the wheel well liner and fender flare then push up on the (2) lower tabs that connect the fender flare to the bumper cover. Note: See the first photo in Step (5) for tab clarity. Using your other hand pry the rear fender flare away from the car until it pops free. Release side marker bulb from fender flare.



5. The first photo shows the lower fender flare tabs released. Using an offset phillips screwdriver or wrench with a phillips drive bit remove hidden fastener 3 behind the fender flare.



6. Using a phillips screwdriver, remove fastener 4 from the bottom of the bumper cover.



**PERIODICALLY CHECK THIS RECEIVER HITCH TO ENSURE THAT ALL FASTENERS ARE TIGHT AND THAT ALL STRUCTURAL COMPONENTS ARE SOUND.**



### INSTALLATION STEPS:

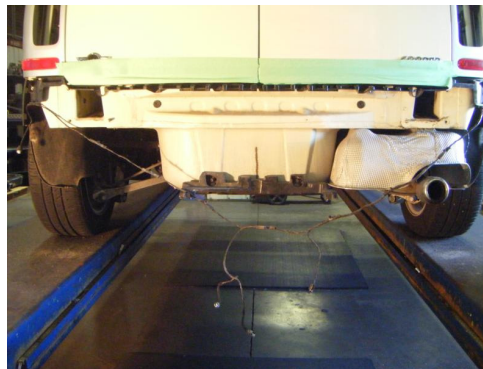
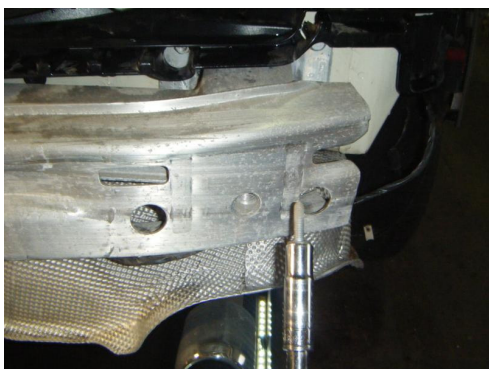
7. Your bumper cover is now connected only by locking tabs. Pull back on each side of the bumper cover until it pops free. Disconnect the (2) license plate light harnesses and the rear sensor harness. Place bumper cover in a safe place to prevent damage.



8. The first photo shows the bumper cover removed, exposing the aluminum bumper beam. Using a flat blade screwdriver remove the (7) wiring harness clips from the bumper beam.



9. Using a ratchet, socket extension, and 13mm socket remove (4) 8mm bolts and (4) 8mm nuts from bumper beam. Remove bumper beam from car. **Note:** Support bumper beam before removing bolts to prevent from falling.



**PERIODICALLY CHECK THIS RECEIVER HITCH TO ENSURE THAT ALL FASTENERS ARE TIGHT AND THAT ALL STRUCTURAL COMPONENTS ARE SOUND.**

**INSTALLATION STEPS:**

10. Raise hitch into position by aligning the holes and weld studs on the car with the holes in hitch. Sandwich the hitch between the bumper beam and the rear of the car.



11. Secure hitch using (4) 8mm bolts and (4) 8mm nuts removed in Step (9). Torque all 8mm hardware to 24 ft-lbs.



12. An access hole will need to be drilled through your bumper cover to allow access to the receiver tube. Mark your drill location by measuring down from the bumper cover lip 3-3/4" and center by using the dimple in the license plate cover. Using a 2-1/2" hole saw drill through the license plate holder and bumper cover. When drilling make sure not to drill through the sensor bracket or loose wiring.

**NOTE:** Verify drill location prior to drilling

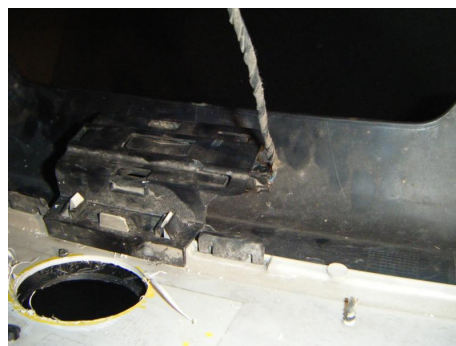


**PERIODICALLY CHECK THIS RECEIVER HITCH TO ENSURE THAT ALL FASTENERS ARE TIGHT AND THAT ALL STRUCTURAL COMPONENTS ARE SOUND.**



### INSTALLATION STEPS:

13. Your hitch is now fully installed and car is ready for re-assembly. Reinstall (7) wiring harness clips removed from bumper beam. Raise bumper cover to car and reconnect the (2) license plate light harnesses and rear sensor harness.



14. Align bumper cover and pull back on the fender flares. Push bumper lock tabs in place until they snap. Re-attach side marker bulbs to fender flares. Reinstall all (8) fasteners removed previously and snap fender flares back into place.



15. The first photo shows hitch fully installed when not in use. The second photo shows hitch ready for use with safety chains attached. **Note:** Trailer not shown.



**PERIODICALLY CHECK THIS RECEIVER HITCH TO ENSURE THAT ALL FASTENERS ARE TIGHT AND THAT ALL STRUCTURAL COMPONENTS ARE SOUND.**