

GROSS LOAD CAPACITY WHEN USED AS A WEIGHT CARRYING HITCH: 2,000 LBS. TRAILER WEIGHT & 200 LBS. TONGUE WEIGHT.

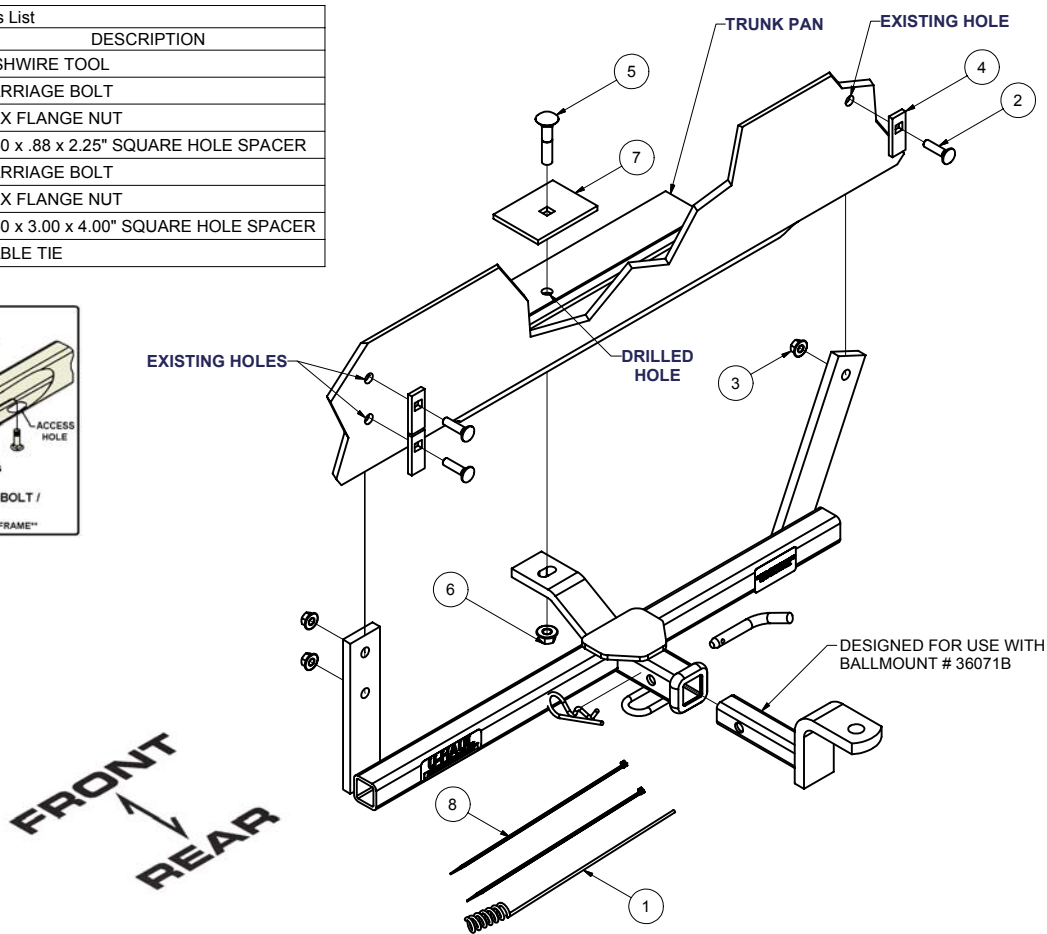
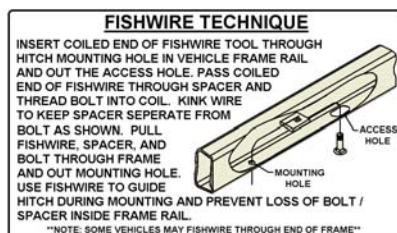
*****DO NOT EXCEED VEHICLE MANUFACTURER'S RECOMMENDED TOWING CAPACITY.*****

WARNING: ALL NON-TRAILER LOADS APPLIED TO THIS PRODUCT MUST BE SUPPORTED BY AUXILIARY STABILIZING STRAPS.

**** FAILURE TO PROPERLY SUPPORT NON-TRAILER LOADS WILL VOID PRODUCT WARRANTY****

HAVING INSTALLATION QUESTIONS? CALL TECHNICAL SUPPORT AT 1-800-798-0813

Parts List			
ITEM	QTY	PART NUMBER	DESCRIPTION
1	1	CM-.375-FW	FISHWIRE TOOL
2	3	3/8-16 x 1 1/2	CARRIAGE BOLT
3	3	3/8-16	HEX FLANGE NUT
4	3	CM-SP2	.250 x .88 x 2.25" SQUARE HOLE SPACER
5	1	1/2-13 x 2 1/2 LG.	CARRIAGE BOLT
6	1	HFN 1213	HEX FLANGE NUT
7	1	CM-SP28	.250 x 3.00 x 4.00" SQUARE HOLE SPACER
8	2	10"	CABLE TIE



HITCH WEIGHT: 28 LBS.

INSTALL TIME

PROFESSIONAL: 60 MINUTES

NOVICE (DIY): 120 MINUTES

INSTALL NOTES:

DRILLING REQUIRED
FISHWIRE FASTENERS
SPARE TIRE REMOVAL

INSTALLATION STEPS

- 1) Remove (2) M10 bumper fascia bolts. (Discard)
- 2) Remove (2) plastic fasteners securing bumper trim panel. (Reuse later)
- 3) Remove spare tire from trunk. (Replace after hitch install)
- 4) Fishwire 3/8" bolts and spacers through existing holes in trunk pan as shown.
- 5) Lift hitch into position over bolts and secure with flange nuts, finger tighten.
- 6) Mark and center punch hole location on the bottom of trunk pan. Drill using a 17/32" drill through trunk pan.
- 7) Install 1/2" carriage bolt and spacer from inside trunk through drilled hole as shown, secure with flange nut. (Note: seal hole in trunk pan with silicone.)
- 8) Torque all 3/8" fasteners to 30 lb-ft and all 1/2" fasteners to 75 lb-ft.
- 9) Use black cable ties to secure bumper fascia. Reinstall plastic fasteners removed in step 2 and replace spare removed in step 3.

PERIODICALLY CHECK THIS RECEIVER HITCH TO ENSURE THAT ALL FASTENERS ARE TIGHT AND THAT ALL STRUCTURAL COMPONENTS ARE SOUND.