

GROSS LOAD CAPACITY WHEN USED AS A WEIGHT CARRYING HITCH: 2000 LBS. TRAILER WEIGHT & 200 LBS. TONGUE WEIGHT.

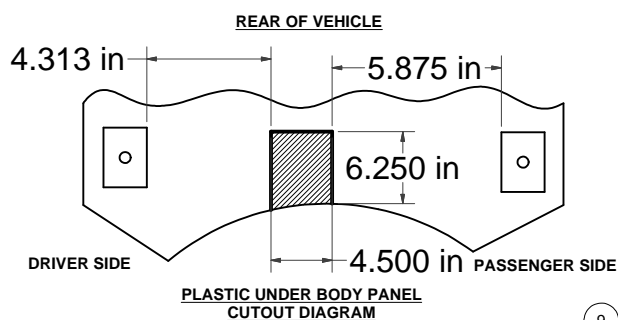
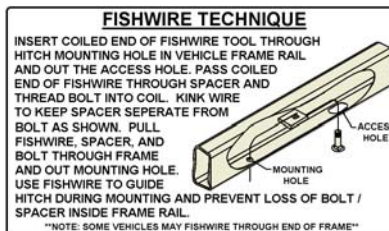
DO NOT EXCEED VEHICLE MANUFACTURER'S RECOMMENDED TOWING CAPACITY.

WARNING: ALL NON-TRAILER LOADS APPLIED TO THIS PRODUCT MUST BE SUPPORTED BY 18050 STABILIZING STRAPS.

** FAILURE TO PROPERLY SUPPORT NON-TRAILER LOADS WILL VOID PRODUCT WARRANTY**

HAVING INSTALLATION QUESTIONS? CALL TECHNICAL SUPPORT AT 1-800-798-0813

Parts List			
ITEM	QTY	PART NUMBER	DESCRIPTION
1	1	3/8-16 x 1 1/4 LG.	CARRIAGE BOLT
2	1	HFN3816	HEX FLANGE NUT
3	2	CM-SP7	.250 x 1.00 x 2.00" SQUARE HOLE SPACER
4	1	CM-SP34	.188 x 1.50 x 3.00" ROUND HOLE SPACER
5	1	CM-SP18	.250 x 1.00 x 2.00" SQUARE HOLE SPACER
6	2	7/16-14 x 1 1/2	CARRIAGE BOLT
7	1	1/2-13 x 2"	HEX BOLT
8	2	7/16-14	HEX FLANGE NUT
9	1	HFN 1213	HEX FLANGE NUT
10	1	CM-438-FW	7/16" FISHWIRE TOOL



TOOLS REQUIRED	
10mm, 3/8", 7/16", 1/2" SOCKETS	
RATCHET	
TORQUE WRENCH	

HITCH WEIGHT: 26 LBS.

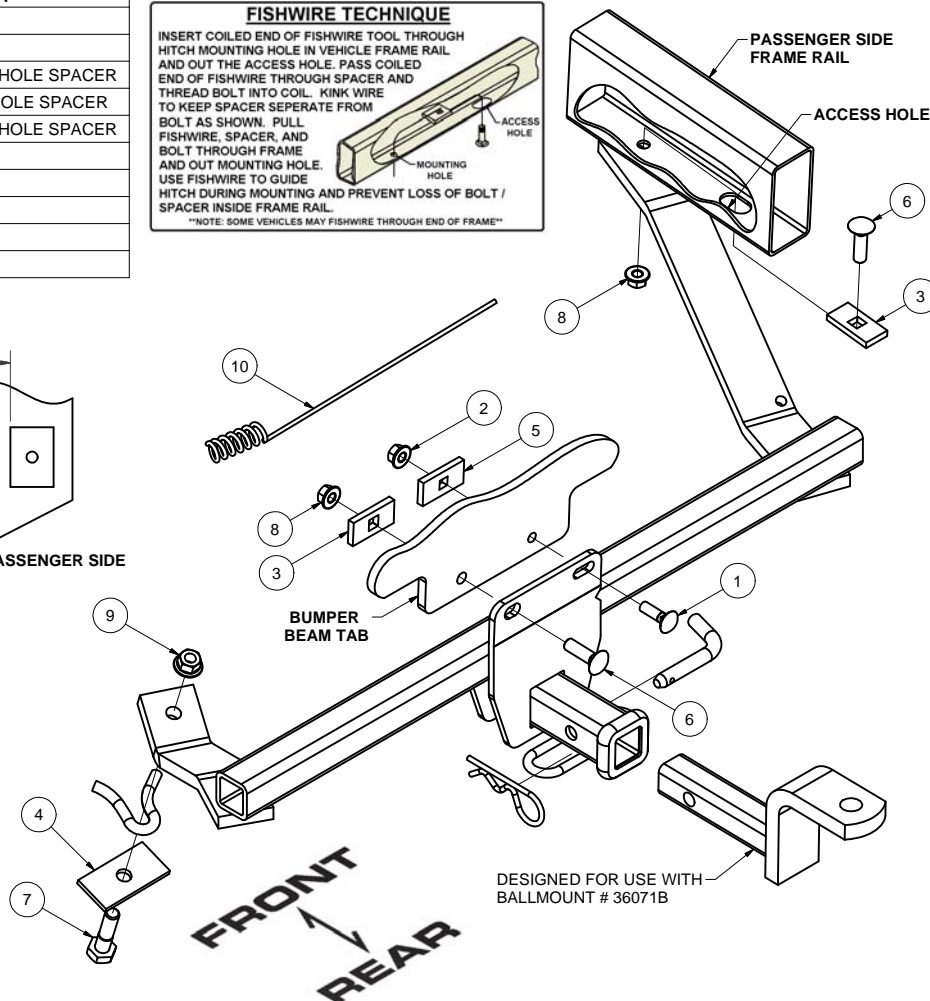
INSTALL TIME

PROFESSIONAL: 60 MINUTES

NOVICE (DIY): 125 MINUTES

INSTALL NOTES:

- NO DRILLING REQUIRED
- LOWER AND TRIM FASCIA



INSTALLATION STEPS

- 1) Remove (2) fascia nuts from the under body panel and lower panel from vehicle. (Nuts will be reinstalled in step 8)
- 2) Trim under body panel as shown in plastic under body panel cutout diagram.
- 3) Fishwire 7/16" carriage bolt and spacer in through the access hole and out the mounting hole in the passenger side frame rail. Leave fishwire attached. (See fishwire technique diagram)
- 4) Raise hitch into position over fishwired bolt, remove fishwire and secure with flange nut.
- 5) Use 3/8" and 7/16" carriage bolts, spacers and flange nuts to secure the center of the hitch to the bumper beam tab as shown.
- 6) Secure driver side arm to top of tow loop using 1/2" bolt, spacer, and flange nut as shown.
- 7) Torque all 1/2" fasteners to 75 lb-ft, all 7/16" fasteners to 50 lb-ft, and all 3/8" fasteners to 30 lb-ft.
- 8) Reinstall the fascia nuts. (Nuts that were removed in step 1)

PERIODICALLY CHECK THIS RECEIVER HITCH TO ENSURE THAT ALL FASTENERS ARE TIGHT AND THAT ALL STRUCTURAL COMPONENTS ARE SOUND.