

GROSS LOAD CAPACITY WHEN USED AS A WEIGHT CARRYING HITCH: 2,000 LBS. TRAILER WEIGHT & 200 LBS. TONGUE WEIGHT.

*****DO NOT EXCEED VEHICLE MANUFACTURER'S RECOMMENDED TOWING CAPACITY.*****

WARNING: ALL NON-TRAILER LOADS APPLIED TO THIS PRODUCT MUST BE SUPPORTED BY 18050 STABILIZING STRAPS.

**** FAILURE TO PROPERLY SUPPORT NON-TRAILER LOADS WILL VOID PRODUCT WARRANTY****

HAVING INSTALLATION QUESTIONS? CALL TECHNICAL SUPPORT AT 1-800-798-0813

Parts List				
ITEM	QTY	PART NUMBER	DESCRIPTION	
1	2	3/8 - 16 x 1 1/4	HEX BOLT	
2	2	3/8"	WASHER	
3	2	HFN3816	HEX FLANGE NUT	
4	4	1/2-13 x 1 1/2	CARRIAGE BOLT	
5	2	CM-SP62	.250" SPACER PLATE	
6	4	HFN 1213	HEX FLANGE NUT	
7	2	CM-SP12	.250 x 1.00 x 2.00" SQUARE HOLE SPACER	
8	2	1_2 FISHWIRE	1/2" FISHWIRE	

TOOLS REQUIRED

17/32" DRILL BIT

DRILL

9/16" WRENCH

9/16" & 3/4" SOCKET

RATCHET

CARBIDE BIT

ROTARY TOOL

TORQUE WRENCH

REVERSE PULL FISHWIRE TECHNIQUE

ATTACH FISHWIRE TO CARRIAGE BOLT AND SLIDE SPACER ONTO FISHWIRE. PUSH THE BOLT THRU THE HOLE FOLLOWED BY THE SPACER (AS SHOWN). PULL BOLT BACK INTO POSITION, PROTRUDING FROM THE FRAME.

HITCH WEIGHT: 29 LBS.

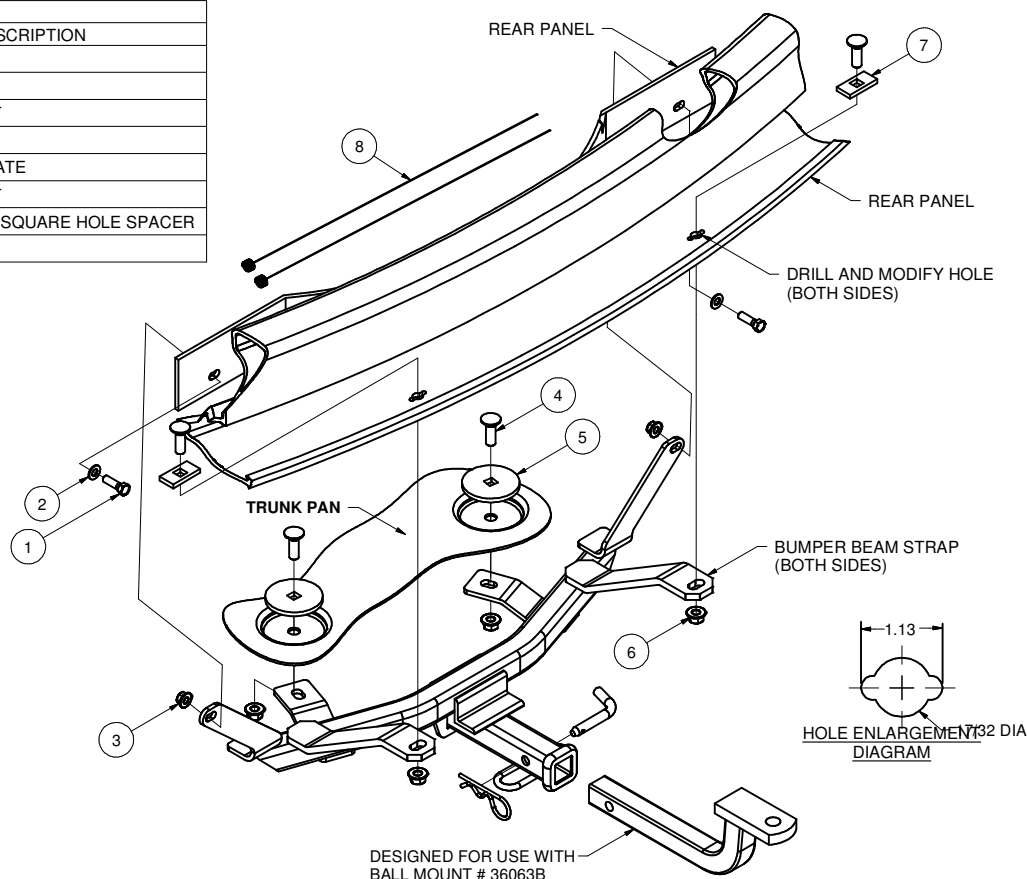
INSTALL TIME

PROFESSIONAL: 45 MINUTES

NOVICE (DIY): 90 MINUTES

INSTALL NOTES:

- DRILLING REQUIRED
- FISHWIRE HARDWARE
- REMOVE EXHAUST ON S MODELS



INSTALLATION STEPS

Note: On "s" models with dual mufflers, the driver side muffler must be unbolted at the flange, removed from the hanger and lowered for ease of installation. On "i" models lower the exhaust by removing the rearmost rubber isolator from the hanger.

- 1) Remove the 2 rubber plugs from spare tire well.
- 2) Place a CM-SP62 spacer plate and 1/2-13 carriage bolt in each hole in the spare tire well as shown.
- 3) Raise the hitch into position and fasten it with a 1/2" flange nut at each carriage bolt installed in Step 2. Secure the hitch at the body mount straps using the supplied 3/8-16 hardware as shown. (Do not tighten fasteners until the next step.)
- 4) Snug fasteners so the hitch will not move. Using the hitch as a template, mark the holes in the rear panel and then remove the hitch. Drill the holes using a 17/32" drill bit and modify using a carbide bit and rotary tool to allow insertion of the 1/2" carriage bolt and CM-SP12 spacer. (See Hole Enlargement Diagram.)
- 5) Reverse fishwire a 1/2-13 carriage bolt and CM-SP12 spacer into each hole. (See Reverse Pull Fishwire Technique.)
- 6) Raise the hitch into position and secure using the provided hardware.
- 7) Torque all 3/8" fasteners to 30 lb-ft. and all 1/2" fasteners to 75 lb-ft.
- 8) Use silicone caulk (or equivalent) to seal the holes from exhaust fumes and water.
- 9) Replace muffler removed in Step 1.

PERIODICALLY CHECK THIS RECEIVER HITCH TO ENSURE THAT ALL FASTENERS ARE TIGHT AND THAT ALL STRUCTURAL COMPONENTS ARE SOUND.