

13559 / 78590 / 757590

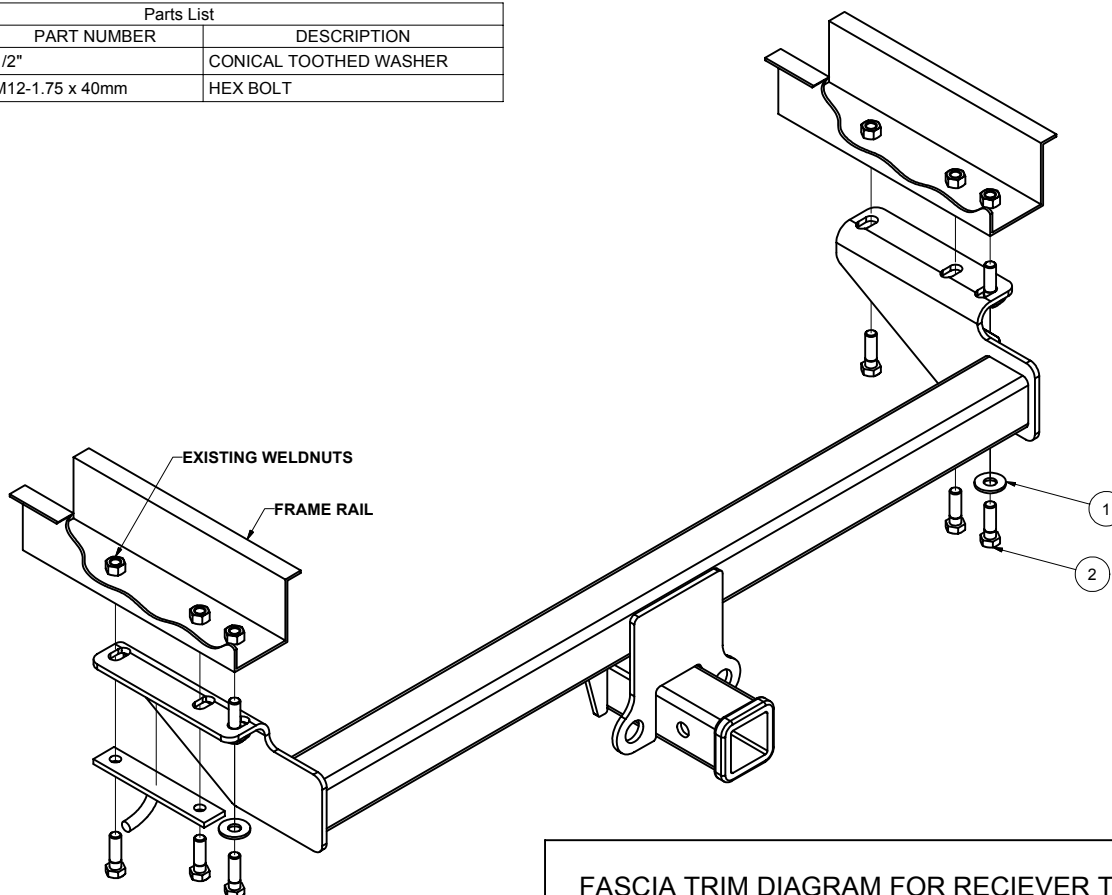
VOLVO XC90

7/3/07

GROSS LOAD CAPACITY WHEN USED AS A WEIGHT CARRYING HITCH: 3500 LBS. TRAILER WEIGHT & 350 LBS. TONGUE WEIGHT.
 GROSS LOAD CAPACITY WHEN USED AS A WEIGHT DISTRIBUTION HITCH: 5000 LBS. TRAILER WEIGHT & 500 LBS. TONGUE WEIGHT

*****DO NOT EXCEED VEHICLE MANUFACTURER'S RECOMMENDED TOWING CAPACITY.*****

Parts List			
ITEM	QTY	PART NUMBER	DESCRIPTION
1	2	1/2"	CONICAL TOOTHED WASHER
2	2	M12-1.75 x 40mm	HEX BOLT



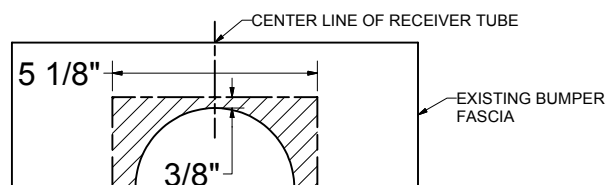
HITCH WEIGHT: 30 LBS.

INSTALL TIME: 30 MINUTES

INSTALL NOTES:

NO DRILLING REQUIRED
 FASCIA TRIMMING REQUIRED

FASCIA TRIM DIAGRAM FOR RECEIVER TUBE



INSTALLATION STEPS

- 1) Remove tie down bracket from passenger side frame rail. Temporarily remove rearmost exhaust hanger bracket from driver's side frame rail.
- 2) Lower spare tire to ease installation.
- 3) Loosely position hitch on car aligning hitch slots with three 12mm weld nuts in frame rails.
- 4) Trim fascia as shown to fit hitch under the vehicle. (see diagram above).
- 5) Replace exhaust hanger bracket under driver side plate, mount hitch using 12mm bolts previously removed, and hardware provided as shown.
- 6) Torque all fasteners to 59 lb.-ft.

PERIODICALLY CHECK THIS RECEIVER HITCH TO ENSURE THAT ALL FASTENERS ARE TIGHT AND THAT ALL STRUCTURAL COMPONENTS ARE SOUND.

Curt Manufacturing Inc., warrants this product to be free of defects in material and/or workmanship at the time of retail purchase by the original purchaser. If the product is found to be defective, Curt Manufacturing Inc., may repair or replace the product, at their option, when the product is returned, prepaid, with proof of purchase. Alteration to, misuse of, or improper installation of this product voids the warranty. Curt Manufacturing Inc.'s liability is limited to repair or replacement of products found to be defective, and specifically excludes liability for incidental or consequential loss or damage.

10/24/06 1/9/06