

INSTALLATION INSTRUCTIONS

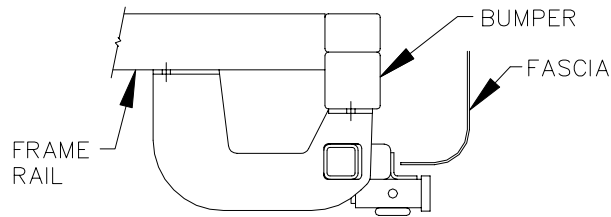
EQUIPMENT REQUIRED: UTILITY KNIFE

WIRING ACCESS LOCATION: PC3, PC4

DRILL BITS: 7/16

HITCH REQUIRES 1/2" PIN AND CLIP

WRENCHES: (TIGHTEN ALL FASTENERS WITH TORQUE WRENCH) 11/16



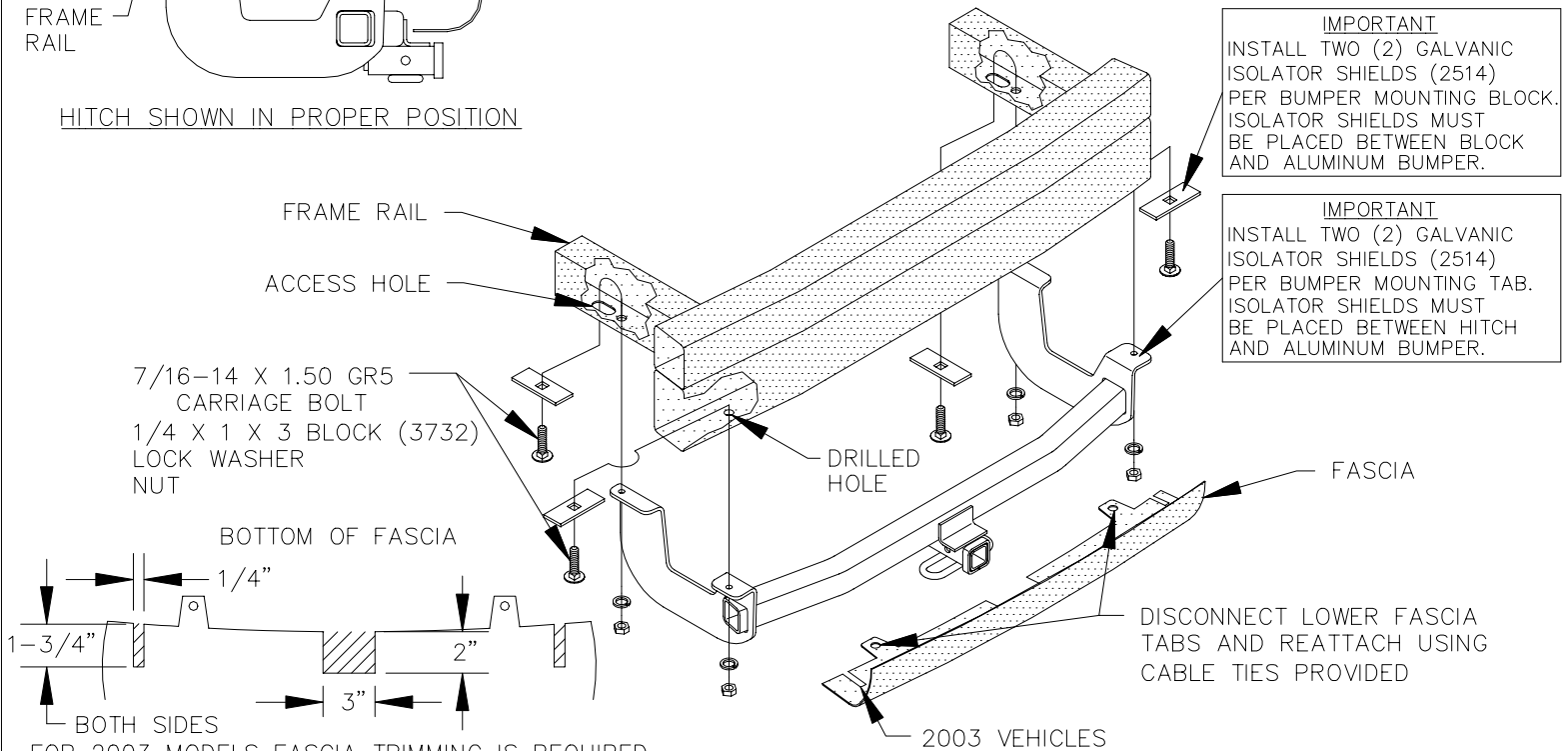
HITCH SHOWN IN PROPER POSITION

FOR 2003 MODELS

* ADDITIONAL INSTALLATION TIME REQUIRED *

FASCIA TRIMMING REQUIRED. OBTAIN
VEHICLE OWNER APPROVAL BEFORE
CUTTING.

3500 LB MAX GROSS TRAILER WT
300 LB MAX TONGUE WEIGHT
DO NOT EXCEED TOWING VEHICLE RATINGS



FOR 2003 MODELS FASCIA TRIMMING IS REQUIRED

1. DISCONNECT THE TWO (2) FASCIA TABS HOLDING THE LOWER FASCIA TO THE TRUNK PAN.
2. FISHWIRE THE FORWARD FASTENERS IN THE FRAME RAIL AS SHOWN ABOVE.
3. APPLY THE GALVANIC ISOLATOR SHEILDS TO THE BLOCKS AND HITCH TABS THAT CONTACT THE ALUMINUM BUMPER.
4. RAISE THE HITCH INTO POSITION AND ATTACH WITH FORWARD FASTENERS.
ON 2003 VEHICLES, NOTCH FASCIA AS NECESSARY.
5. USING THE HITCH AS A TEMPLATE, DRILL TWO (2) 7/16" HOLES IN THE BUMPER.
6. FISHWIRE CARRIAGE BOLTS AND BLOCKS THRU HOLES IN BUMPER AND INSTALL LOCK WASHERS AND NUTS.
7. REATTACH THE LOWER FASCIA TABS WITH CABLE TIES PROVIDED.

TIGHTEN 7/16" FASTENERS TO 50 LB-FT.

<p>DESIGNED FOR USE WITH</p> <p>PIN 06237</p> <p>CLIP 55515</p> <p>DRAWBAR 36021 ZINC</p>	<p>DRAWBAR REPLACEMENT KIT (INCLUDES PIN & CLIP)</p> <p>36071 ZINC</p> <p>NOTE: REPLACEMENT DRAWBAR AVAILABLE ONLY IN KIT. PINS & CLIPS AVAILABLE SEPARATELY.</p>
<p>USE ONLY DRAWBAR SHOWN FOR CORRECT BUMPER CLEARANCE & HEIGHT. <u>REMOVE DRAWBAR WHEN NOT TOWING</u> TO PROTECT DRAWBAR OPENING IN HITCH WHEN NOT TOWING, INSERT COVER #2211 (PURCHASED SEPARATELY).</p>	

THIS PRODUCT COMPLIES WITH SAFETY SPECIFICATIONS AND REQUIREMENTS FOR CONNECTING DEVICES AND TOWING
SYSTEMS OF THE STATE OF NEW YORK AND V.E.S.C. REGULATION V-5.

APPROX WEIGHT (LB.)	27	FASTENER KIT NO.	K36282
---------------------	----	------------------	--------

NOTE: Check hitch frequently, making sure all fasteners and ball are properly tightened. If hitch is removed, plug all holes in trunk pan or other body panels to prevent entry of water and exhaust fumes. A hitch or ball which has been damaged should be removed and replaced. Observe safety precautions when working beneath a vehicle and wear eye protection. Follow car maker's specs for maximum trailer weight and tongue weight. Do not cut access or attachment holes with a torch.



Plymouth, Michigan
www.draw-tite.com