

INSTALLATION INSTRUCTIONS

EQUIPMENT REQUIRED: SEALANT

WIRING ACCESS LOCATION: PC3

DRILL BITS: 1/8, 1/2

HITCH REQUIRES 1/2" PIN AND CLIP

WRENCHES: (TIGHTEN ALL FASTENERS WITH TORQUE WRENCH) 11/16

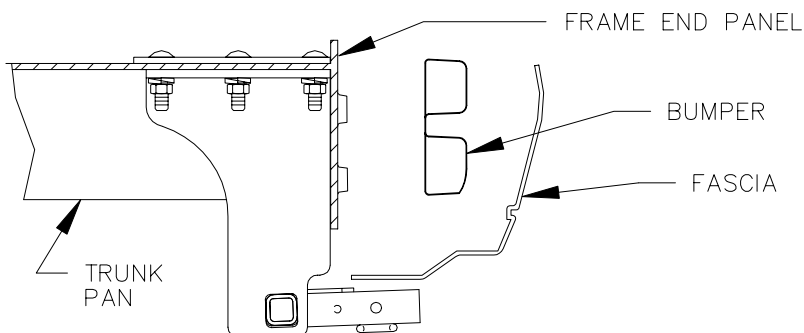
VEHICLE

CADILLAC CTS

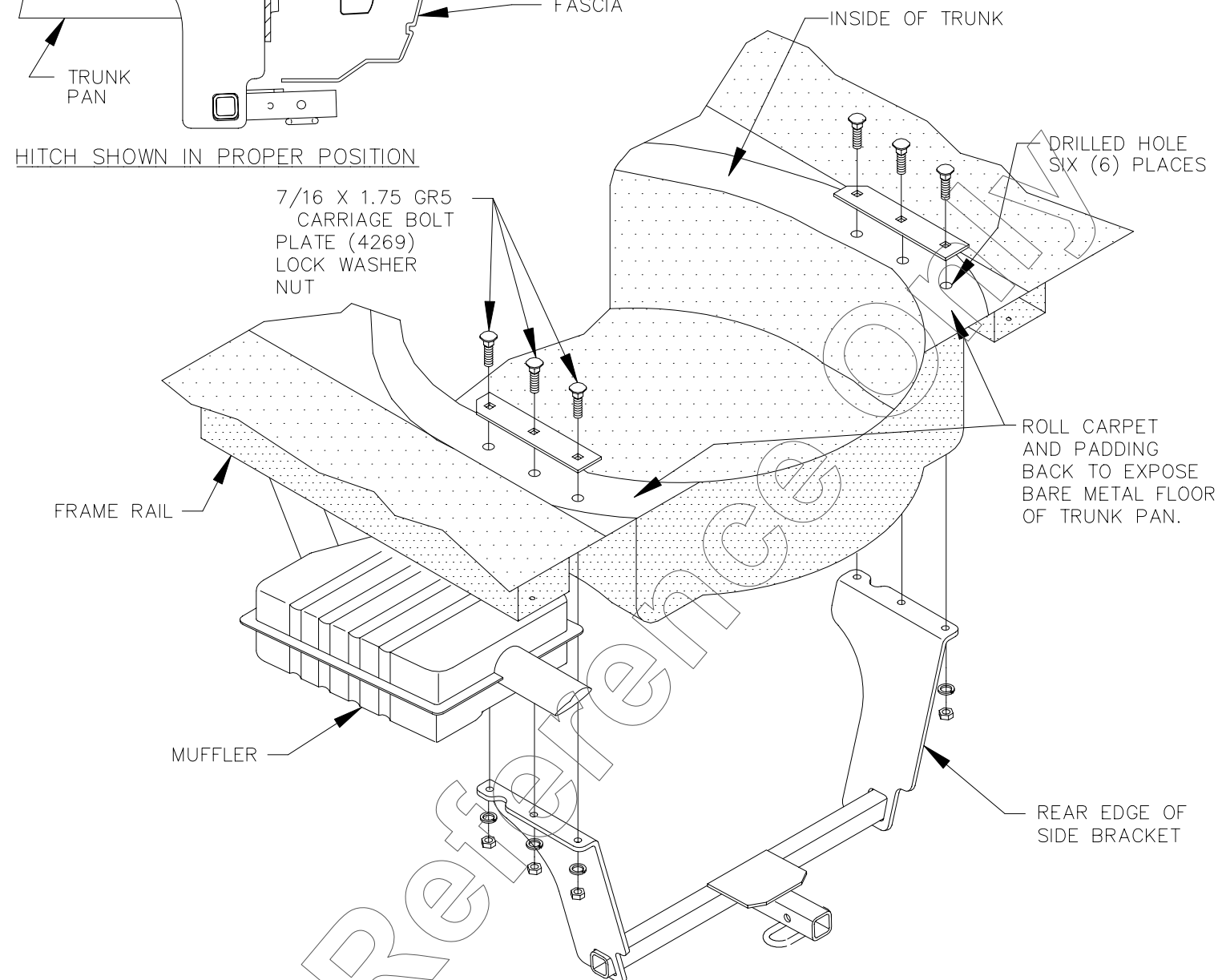
HITCH NO.

24729
77043

2000 LB MAX GROSS TRAILER WT
200 LB MAX TONGUE WEIGHT
DO NOT EXCEED TOWING VEHICLE RATINGS

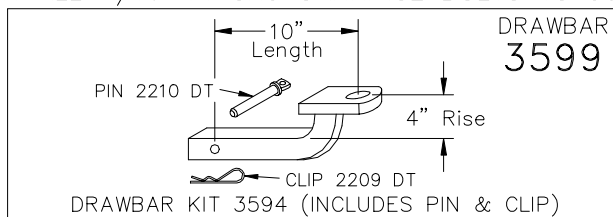


NOTE: FASTENERS TYPICAL
BOTH SIDES



1. LOWER MUFFLER BY REMOVING THE TWO (2) REARMOST EXHAUST HANGERS AND THE ONE (1) FORWARD EXHAUST HANGER.
2. OPEN THE TRUNK AND REMOVE THE SPARE TIRE COVER.
3. ROLL THE CARPET AND PADDING BACK TO EXPOSE THE BARE METAL FLOOR OF THE TRUNK PAN.
4. RAISE HITCH INTO POSITION. ALIGN THE REAR EDGE OF THE SIDE BRACKET ON HITCH FLUSH AGAINST THE FRAME END PANEL.
5. USING THE HITCH AS A TEMPLATE MARK AND CENTER PUNCH THE THREE (3) HOLES ON BOTH SIDES.
6. LOWER HITCH. DRILL 1/8 PILOT HOLES UP THROUGH BOTTOM OF TRUNK PAN AT CENTER PUNCHED LOCATIONS.. CHECK HOLE ALIGNMENT UNDER VEHICLE AND ADJUST IF NECESSARY. ENLARGE HOLES TO 1/2.
7. POSITION PLATE (4269) OVER HOLES INSIDE OF TRUNK AND INSERT THE CARRIAGE BOLTS THROUGH PLATE AND TRUNK PAN.
NOTE: SEAL ALL HOLES DRILLED IN VEHICLE TO PREVENT ENTRY OF EXHAUST FUMES INTO TRUNK.
8. RAISE HITCH BACK INTO POSITION OVER CARRIAGE BOLTS AND INSTALL LOCK WASHERS AND HEX NUTS AS SHOWN. TIGHTEN ALL FASTENERS TO 50 LB-FT.
9. ROLL CARPET AND PADDING BACK IN PLACE AND REINSTALL SPARE TIRE COVER.
10. REINSTALL THE THREE (3) EXHAUST HANGERS REMOVED IN STEP 1.

TIGHTEN ALL 7/16-14 GR5 CARRIAGE BOLTS TO 50 LB-FT.



USE ONLY THE DRAWBAR SHOWN FOR CORRECT BUMPER CLEARANCE AND HEIGHT.
DRAWBAR MUST BE USED IN THE RISE POSITION ONLY.

THIS PRODUCT COMPLIES WITH SAFETY SPECIFICATIONS AND REQUIREMENTS FOR CONNECTING DEVICES AND TOWING SYSTEMS OF THE STATE OF NEW YORK AND V.E.S.C. REGULATION V-5.

APPROX WEIGHT (LB.)
26

FASTENER KIT
F24729

NOTE: Check hitch frequently, making sure all fasteners and ball are properly tightened. If hitch is removed, plug all holes in trunk pan or other body panels to prevent entry of water and exhaust fumes. A hitch or ball which has been damaged should be removed and replaced. Observe safety precautions when working beneath a vehicle and wear eye protection. Follow car maker's specs for maximum trailer weight and tongue weight. Do not cut access or attachment holes with a torch.

TOWING PRODUCTS

Canton, Michigan
Elkhart, Indiana