

INSTALLATION INSTRUCTIONS

VEHICLE	HITCH NO.
CADILLAC SEVILLE (ALL MODELS) CADILLAC ELDORADO	36175

EQUIPMENT REQUIRED:

WIRING ACCESS LOCATION: PC1, PC2

DRILL BITS: NONE

WRENCHES: (TIGHTEN ALL FASTENERS WITH TORQUE WRENCH) 13mm, 3/4

3500 LB MAX GROSS TRAILER WT
300 LB MAX TONGUE WEIGHT
DO NOT EXCEED TOWING VEHICLE RATING

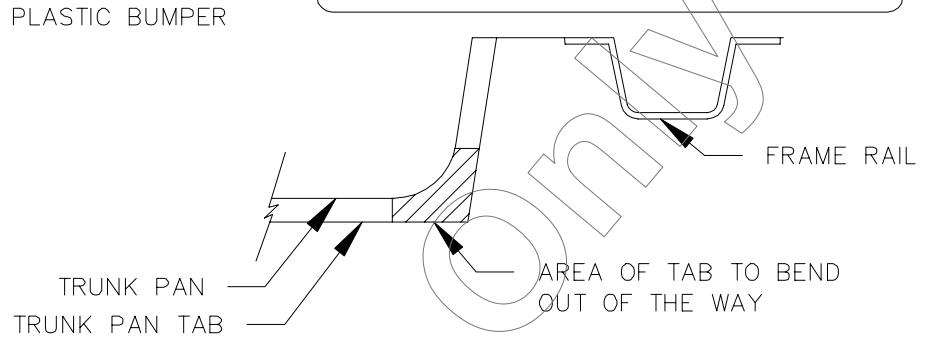
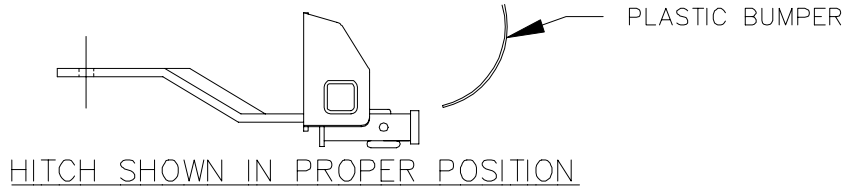


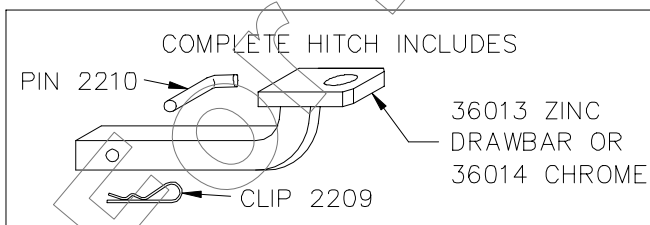
FIG. 1. TYPICAL BOTH SIDES

1. ON MODELS WITH DUAL EXHAUST PIPES, OR EXHAUST HANGERS AT THE E/A UNITS, LOWER MUFFLER AND TAIL PIPES. SUPPORT MUFFLER ASSEMBLY WITH A WIRE OR JACK TO PREVENT EXCESS TRAVEL WHICH COULD BE DAMAGING TO EXHAUST SYSTEM.
2. REMOVE THE BOTTOM OUTBOARD E.A. BOLT, EACH SIDE, AND INBOARD E.A. BOLT, EACH SIDE. RETURN E.A. BOLTS TO CUSTOMER.
3. RAISE HITCH INTO POSITION BETWEEN E/A UNIT AND EXHAUST HANGER (IF PRESENT) AND INSTALL M8 FASTENERS AS SHOWN.

NOTE: BEND TRUNK PAN TABS AS SHOWN IN FIG. 1 TO ELIMINATE INTERFERENCE.

4. FISHWIRE BLOCK (1336) THROUGH THE ACCESS HOLE ON THE INSIDE OF THE FRAME TO THE THIRD SLOT FROM THE END OF THE FRAME. INSTALL THE HANDLE NUT THROUGH THE SLOT FORWARD OF THE ATTACHING SLOT FOR THE HITCH.
5. INSTALL 1/2" FASTENERS AS SHOWN.
6. REATTACH MUFFLER AND TAIL PIPES.

TIGHTEN M8 CL9.8 FASTENERS TO 25 LB.-FT.
TIGHTEN 1/2 GR5 FASTENERS TO 75 LB.-FT.



DRAWBAR REPLACEMENT KIT
(INCLUDES PIN & CLIP)

36063 ZINC
36064 CHROME

NOTE: REPLACEMENT DRAWBAR AVAILABLE ONLY IN KIT. PINS & CLIPS AVAILABLE SEPARATELY.

USE ONLY THE DRAWBAR SHOWN FOR CORRECT BUMPER CLEARANCE AND HEIGHT.
REMOVE DRAWBAR WHEN NOT TOWING

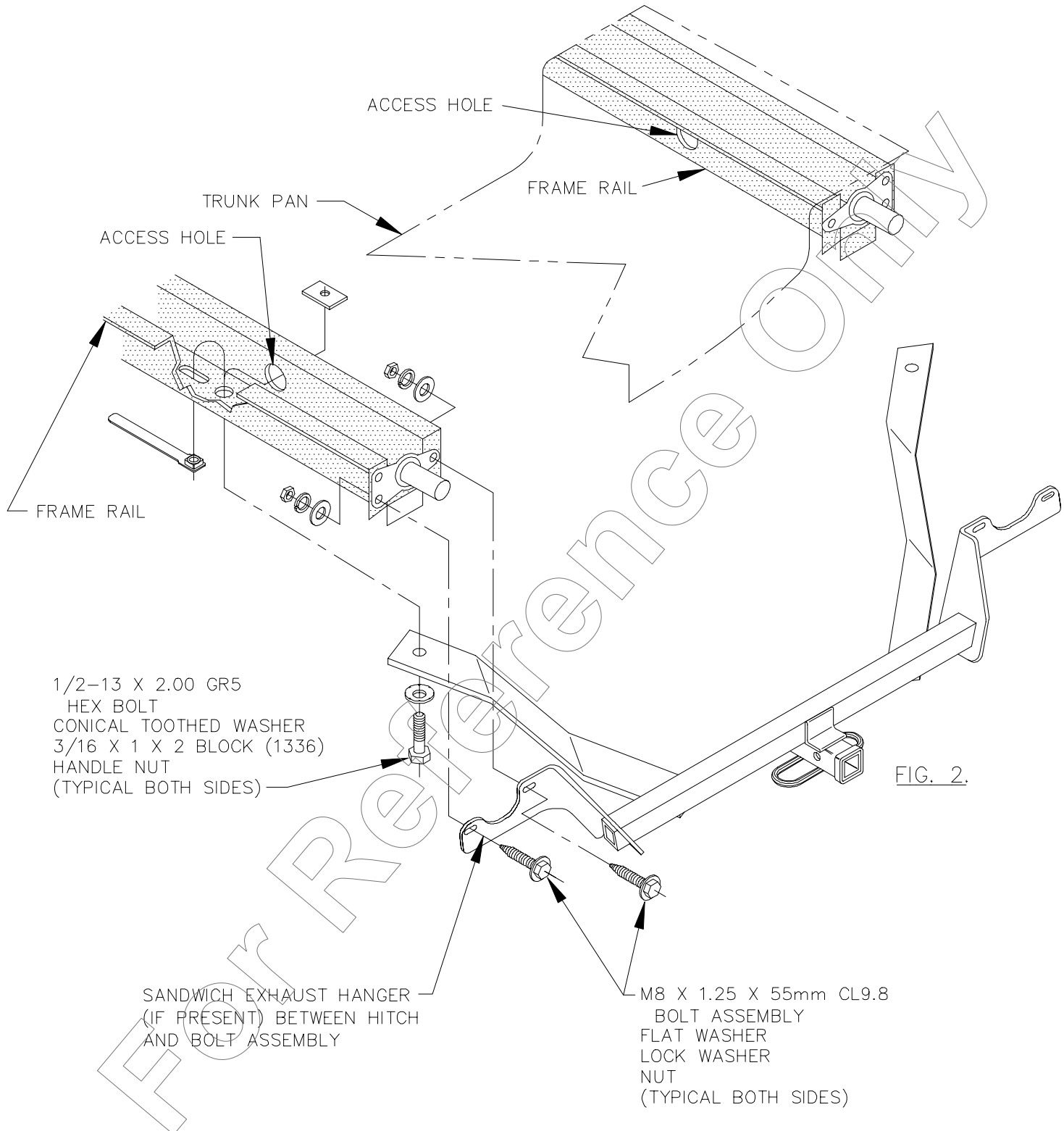
TO PROTECT DRAWBAR OPENING IN HITCH WHEN NOT TOWING,
INSERT COVER #2211 (PURCHASED SEPARATELY).

THIS PRODUCT COMPLIES WITH SAFETY SPECIFICATIONS AND REQUIREMENTS FOR CONNECTING DEVICES AND TOWING SYSTEMS OF THE STATE OF NEW YORK AND V.E.S.C. REGULATION V-5.

APPROX WEIGHT (LB.)	33.5	FASTENER KIT NO.	K36175
---------------------	------	------------------	--------

NOTE: Check hitch frequently, making sure all fasteners and ball are properly tightened. If hitch is removed, plug all holes in trunk pan or other body panels to prevent entry of water and exhaust fumes. A hitch or ball which has been damaged should be removed and replaced. Observe safety precautions when working beneath a vehicle and wear eye protection. Follow car maker's specs for maximum trailer weight and tongue weight. Do not cut access or attachment holes with a torch.

VEHICLE	HITCH NO.
CADILLAC SEVILLE (ALL MODELS) CADILLAC ELDORADO	36175



THIS PRODUCT COMPLIES WITH SAFETY SPECIFICATIONS AND REQUIREMENTS FOR CONNECTING DEVICES AND TOWING SYSTEMS OF THE STATE OF NEW YORK AND V.E.S.C. REGULATION V-5.

APPROX WEIGHT (LB.)	33.5	FASTENER KIT NO.	K36175
---------------------	------	------------------	--------

NOTE: Check hitch frequently, making sure all fasteners and ball are properly tightened. If hitch is removed, plug all holes in trunk pan or other body panels to prevent entry of water and exhaust fumes. A hitch or ball which has been damaged should be removed and replaced. Observe safety precautions when working beneath a vehicle and wear eye protection. Follow car maker's specs for maximum trailer weight and tongue weight. Do not cut access or attachment holes with a torch.