

INSTALLATION INSTRUCTIONS

EQUIPMENT REQUIRED:

DRILL BITS: 1/2"

WRENCHES: (TIGHTEN ALL FASTENERS WITH TORQUE WRENCH) 17mm, 3/4

SHEET 1 OF 1	©1999 Draw-Tite, Inc.	2-11-99
VEHICLE		HITCH NO.
KIA SPORTAGE		36266

3500 LB MAX GROSS TRAILER WT
300 LB MAX TONGUE WEIGHT
DO NOT EXCEED TOWING VEHICLE RATINGS

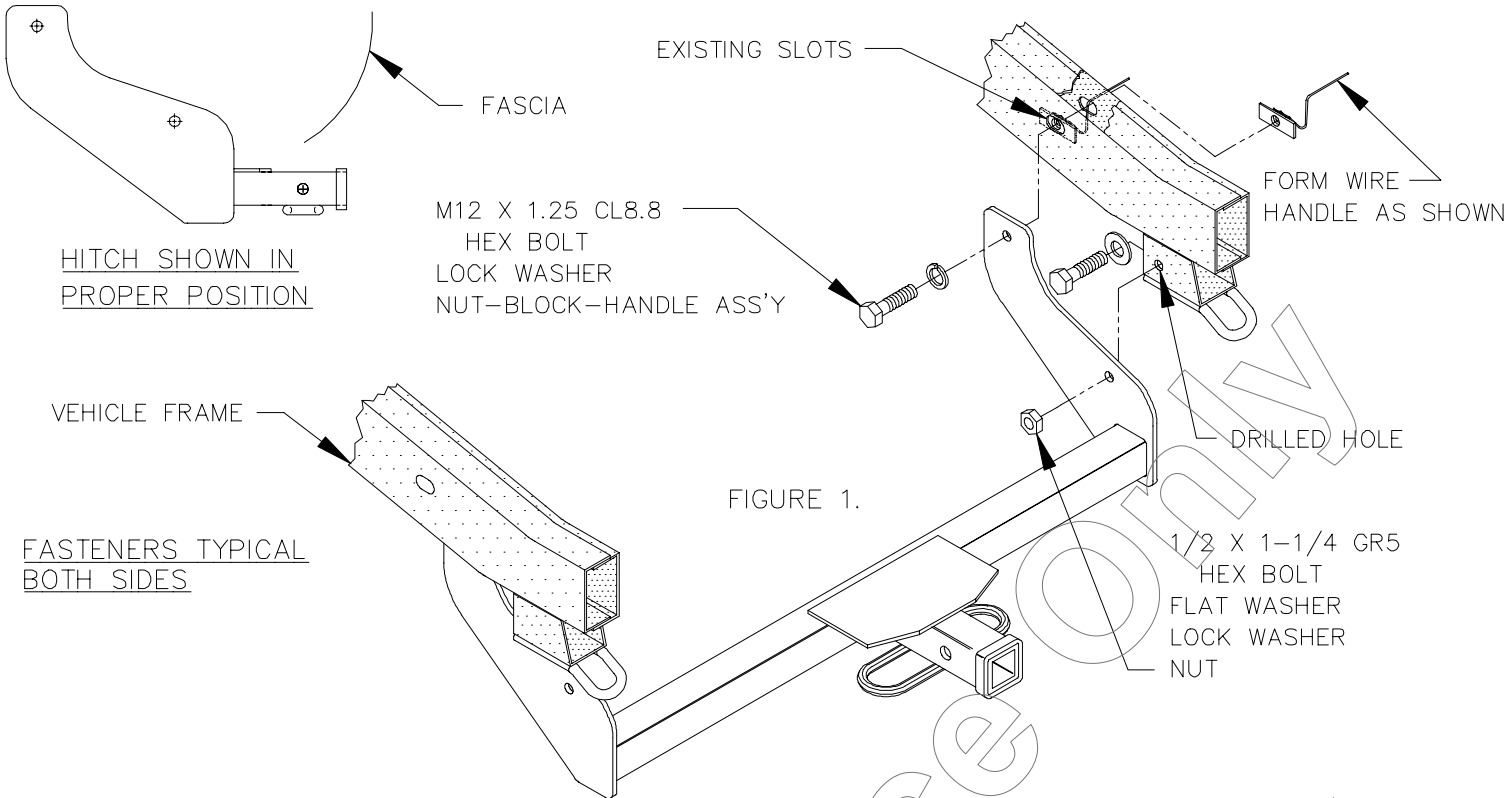


FIGURE 1.

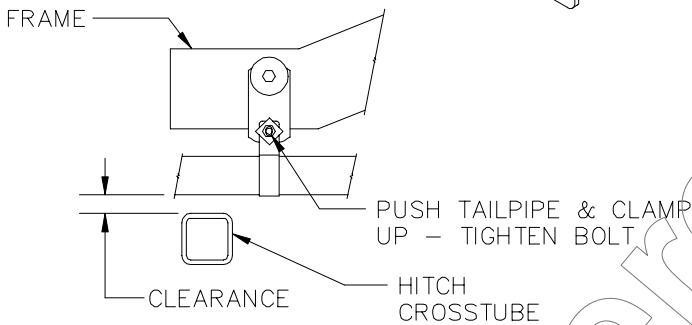


FIGURE 2.

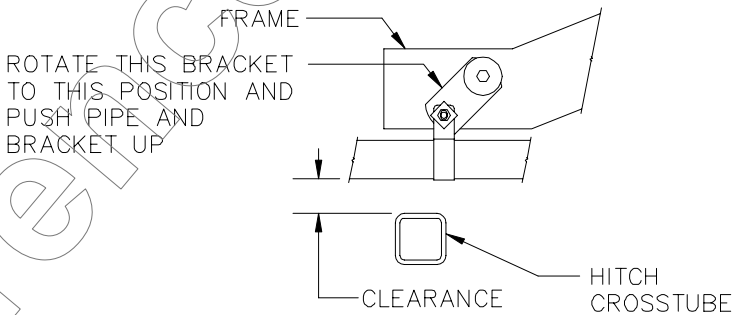
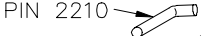
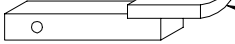
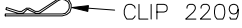


FIGURE 3.
(ALTERNATE)

1. RAISE HITCH INTO POSITION
2. FEED NUT-BLOCK-HANDLE ASSEMBLIES THROUGH OUTER SLOT IN FRAME AND LOOSELY INSTALL 12mm HEX BOLTS THROUGH SIDE BRACKET AND INNER SLOT IN FRAME AS SHOWN IN FIGURE 1.
3. RAISE HITCH INTO POSITION SO THAT RECEIVER IS LEVEL WITH VEHICLE. HOLE IN HITCH SHOULD BE NEAR CENTER OF THE DOWN LOOP EXTENSION. SEE FIGURE 1.
4. MARK AND DRILL 1/2" HOLE IN THE DOWN LOOP EXTENSIONS. HITCH MAY BE LOWERED DURING DRILLING.
5. INSTALL 1/2" HEX BOLTS THROUGH SIDE BRACKET AND DRILLED HOLES AS SHOWN IN FIGURE 1.
6. ADDITIONAL TAILPIPE TO HITCH CLEARANCE MAY BE OBTAINED BY ONE OF THE FOLLOWING PROCEDURES:
 - A. LOOSEN LOWER TAILPIPE HANGER BOLT. PUSH TAILPIPE AND CLAMP UP AND TIGHTEN BOLT. SEE FIGURE 2.
 - B. LOOSEN LOWER TAILPIPE HANGER BOLT AND ROTATE BRACKET, PUSH TAILPIPE AND CLAMP UP. TIGHTEN BOLT IN POSITION SHOWN. SEE FIGURE 3.

COMPLETE HITCH INCLUDES	DRAWBAR REPLACEMENT KIT (INCLUDES PIN & CLIP)
 PIN 2210	36051 ZINC
 36001 ZINC DRAWBAR	36052 CHROME
 CLIP 2209	NOTE: REPLACEMENT DRAWBAR AVAILABLE ONLY IN KIT. PINS & CLIPS AVAILABLE SEPARATELY.
36002 CHROME	

USE ONLY THE DRAWBAR SHOWN FOR CORRECT BUMPER CLEARANCE AND HEIGHT.
REMOVE DRAWBAR WHEN NOT TOWING
TO PROTECT DRAWBAR OPENING IN HITCH WHEN NOT TOWING,
INSERT COVER #2211 (PURCHASED SEPARATELY).

TIGHTEN M12 CL8.8 FASTENERS TO 68 LB.-FT.
TIGHTEN 1/2 GR5 FASTENERS TO 75 LB.-FT.

THIS PRODUCT COMPLIES WITH SAFETY SPECIFICATIONS AND REQUIREMENTS FOR CONNECTING DEVICES AND TOWING SYSTEMS OF THE STATE OF NEW YORK AND V.E.S.C. REGULATION V-5.

APPROX WEIGHT (LB.)	FASTENER KIT NO.
25	1130-956

NOTE: Check hitch frequently, making sure all fasteners and ball are properly tightened. If hitch is removed, plug all holes in trunk pan or other body panels to prevent entry of water and exhaust fumes. A hitch or ball which has been damaged should be removed and replaced. Observe safety precautions when working beneath a vehicle and wear eye protection. Follow car maker's specs for maximum trailer weight and tongue weight. Do not cut access or attachment holes with a torch.

