

CATALOG NUMBER.....217351

APPLICATIONSaab 900 series, all including Turbo,

HITCH CAPACITY1500 pounds gross trailer weight 150 pounds maximum tongue load
OR the maximum load specified by the vehicle manufacturer;
WHICHEVER IS LESS.

PLEASE NOTE: This product complies with safety specifications and requirements for connecting devices and towing systems of the state of New York and regulation V.E.S.C. V-5.

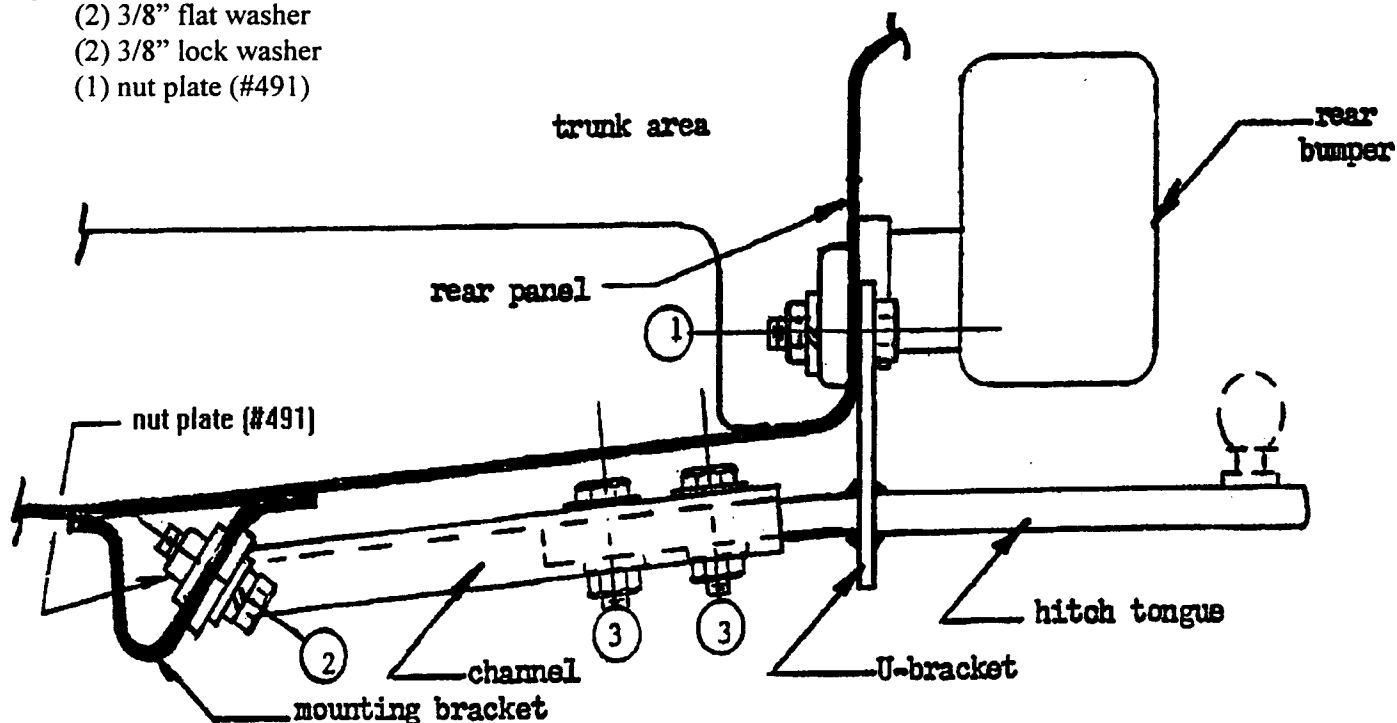
1. Assemble the trailer hitch tongue to channel as shown using 3/8" fasteners ③ .
2. Remove two existing 10mm screws either side of rear bumper center strut at rear panel of car.
3. Mount hitch at rear of car using fasteners ① through hitch U-bracket and rear of car where screws (step 2) were removed. Be certain to install nuts and lock washers on these screws from inside the car.
4. Note match-up of holes in hitch and the car's mounting bracket (underside of trunk floor). Re-drill bracket through holes in hitch if necessary. Fasten hitch to Saab bracket at three holes using fasteners ② .
5. Final tighten all fasteners as specified on reverse of these instructions. Recheck all fasteners occasionally for tightness.

FASTENERS:

- ① (2) 10 x 1.5 x 30mm screw
(2) 7/16" lock washer
(2) 10 x 1.5mm hex nut

- ③ (2) 3/8 x 1 1/2" screw
(2) 3/8" flat washer
(2) 3/8" lock washer
(2) 3/8" hex nut

- ② (2) 3/8 x 1 1/4" screw
(2) 3/8" flat washer
(2) 3/8" lock washer
(1) nut plate (#491)



DATE: 10/22/96

Ⓑ