

## TRAILER HITCH MOUNTING INSTRUCTIONS

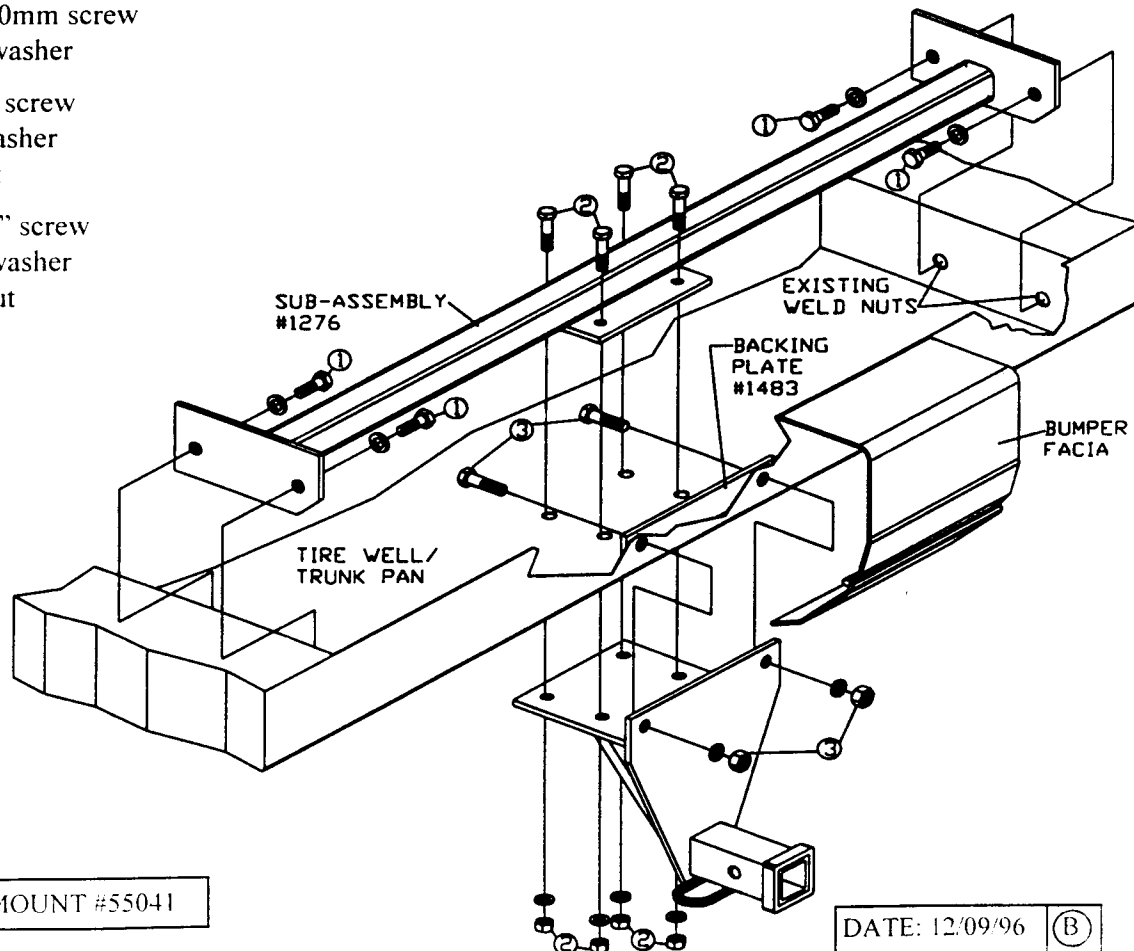
CATALOG NUMBER.....**247274**  
APPLICATION.....Volkswagen Passat, Sedan,  
HITCH CAPACITY.....2000 pounds gross trailer weight 200 pounds maximum tongue load  
OR the maximum load specified by the vehicle manufacturer;  
WHICHEVER IS LESS.

PLEASE NOTE: A. This hitch features a removable ball mount. This hitch is not intended for use as a weight distributing hitch. Before towing, the hitch pin and retainer clip **MUST** be in place securing ball mount to receiver.  
B. This product complies with safety specifications and requirements for connecting devices and towing systems of the state of New York and regulation V.E.S.C. V-5.

1. Temporarily remove the large plastic panel from under rear of car.
2. Inside spare tire well, mark center of car on rearmost vertical surface. Locate backing plate (#1483) centered on car, with holes at 1 1/16" up from bottom surface and mark both holes. Centerpunch and drill two 15/32" diameter holes.
3. Remove and discard, two bolts per side in the tire well. Locate sub-assembly (#1276) as shown in diagram and install fasteners ①.
4. Using sub-assembly as a drill template, drill four holes for fasteners ②.
5. Remove all but a thin layer of undercoating where hitch will meet underside of tire well. Locate hitch aligning holes, attach using fasteners ② and ③.
6. Final tighten all fasteners as specified on reverse of these instructions. Re-install large plastic panel, trim edge to fit around hitch as necessary. Recheck all fasteners occasionally for tightness.

### FASTENERS:

- ① (4) 10 x 1.5 x 30mm screw  
(4) 7/16" lock washer
- ② (4) 3/8 x 1 1/2" screw  
(4) 3/8" lock washer  
(4) 3/8" hex nut
- ③ (2) 7/16 x 1 1/2" screw  
(2) 7/16" lock washer  
(2) 7/16" hex nut



USE BALL MOUNT #55041

DATE: 12/09/96

⑧